

Important: Throughout the spring and summer seasons our we do quote submissions on a first come first serve basis and work hard to do them right the first time. We believe in honoring our commitment to each customer that requests a quotation, therefore we can not consider demands for immediate quotations. We will generally be able turn quotations in about 24-36 hours. During peak season we will require up to 3 days to do a quotation.

Basic Information

Step 1.

Name:

City of Installation:

State:

Contact Tel. #

(We do not call unless your email address is entered incorrectly)

Email Address:

(We have never sold or exchanged your email addresses or other information with any other company!)

Our Terminology

Step 2.

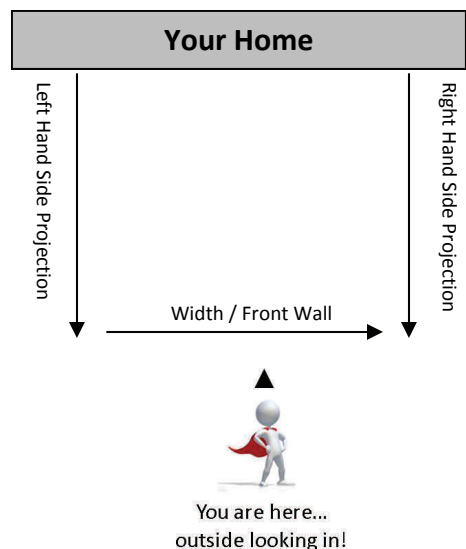
3 Season Modular Walls

We typically will define a 3 season room as one that will have single pane windows and is not going to be heated or cooled on a permanent basis. Both the Alpha Plus and OMEGA systems can be built with single pane glass windows.

4 Season Modular Walls

We typically will define a 4 season room as one that will have at least double pane windows and could be cooled or heated on a permanent basis. Both the Alpha Plus and OMEGA systems can be built with double pane glass windows. ONLY THE OMEGA sunroom system comes with the extra vinyl cladding on the extruded aluminum framing to provide that extra layer of thermal protection making it the ultimate in 4 season comfortability.

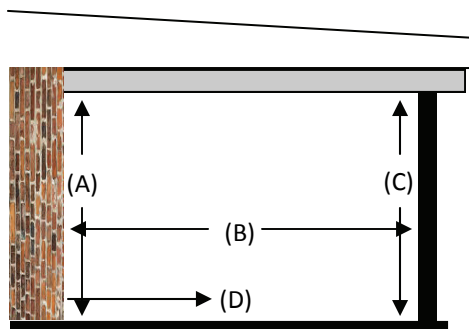
Please fill out all information from an 'outside looking in' perspective.



The following pages cover a number of typical existing roof line configurations. Each opening requires its own entry of width, two side heights and door placement. (See below)

**Leave all spaces blank that do not apply to your scenario.*

If your project is not represented on these pages, fill out as much as you can and then submit your own drawing indicating the number of openings that need to be filled along with all measurements.

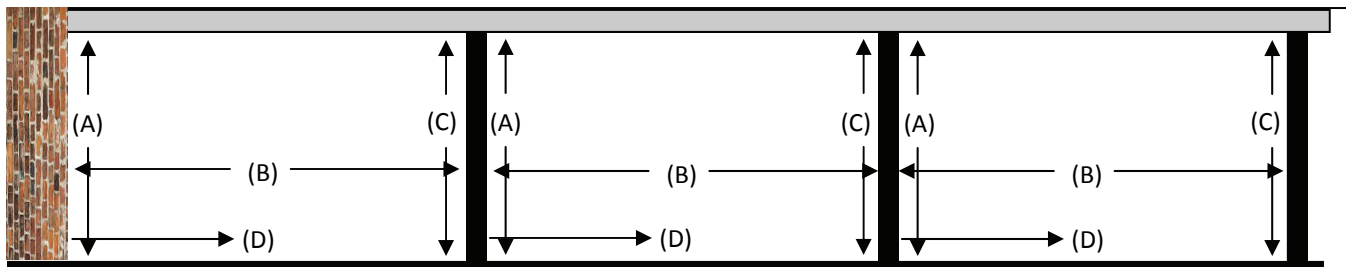


- (A) Start Height
- (B) Opening Width
- (C) End Height
- (D) Distance from wall /post to start of door



Modular Wall Dimensions

Left Hand Side Projection



Wall Height (A):

ft. in.

Wall Width (B):

ft. in.

Wall Height (C):

ft. in.

Door Placement (D):

ft. in.

Wall Height (A):

ft. in.

Wall Width (B):

ft. in.

Wall Height (C):

ft. in.

Door Placement (D):

ft. in.

Wall Height (A):

ft. in.

Wall Width (B):

ft. in.

Wall Height (C):

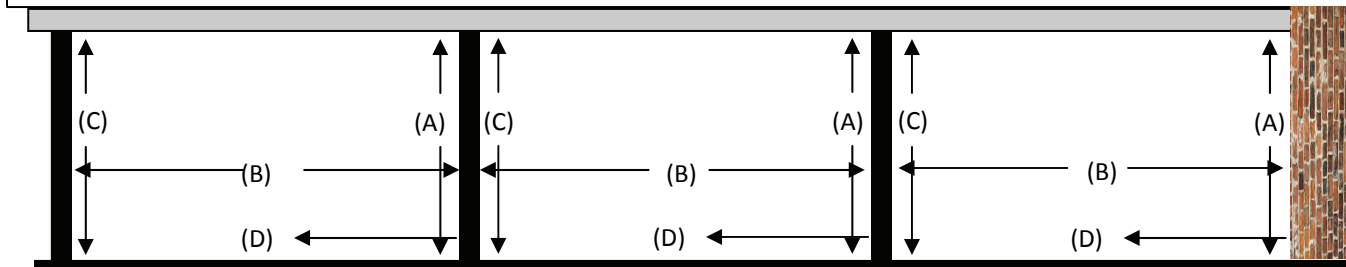
ft. in.

Door Placement (D):

ft. in.

Step 3.

Right Hand Side Projection



Wall Height (A):

ft. in.

Wall Width (B):

ft. in.

Wall Height (C):

ft. in.

Door Placement (D):

ft. in.

Wall Height (A):

ft. in.

Wall Width (B):

ft. in.

Wall Height (C):

ft. in.

Door Placement (D):

ft. in.

Wall Height (A):

ft. in.

Wall Width (B):

ft. in.

Wall Height (C):

ft. in.

Door Placement (D):

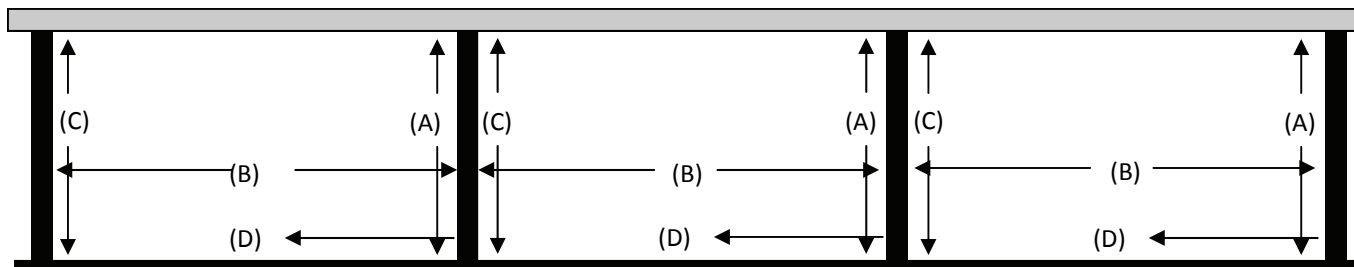
ft. in.



Modular Wall Dimensions (cont'd)

Front Wall / Width

Step 3. (cont'd)



Wall Height (A):

ft. in.

Wall Width (B):

ft. in.

Wall Height (C):

ft. in.

Door Placement (D):

ft. in.

Wall Height (A):

ft. in.

Wall Width (B):

ft. in.

Wall Height (C):

ft. in.

Door Placement (D):

ft. in.

Wall Height (A):

ft. in.

Wall Width (B):

ft. in.

Wall Height (C):

ft. in.

Door Placement (D):

ft. in.

Modular Wall Details

Step 4.

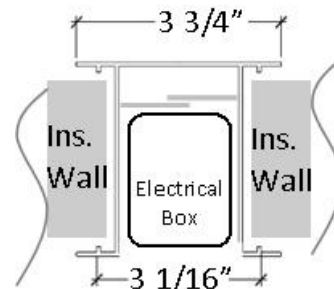
Electrical Utility Mullion:

*This option allows for electrical boxes to be installed between modules. The standard H channel creates a 7/16" width between panels. The EUM creates a 3 1/16" width between panels. Consider the aesthetics along a single wall for this option.

How Many on Left Hand Side Projection? ALL

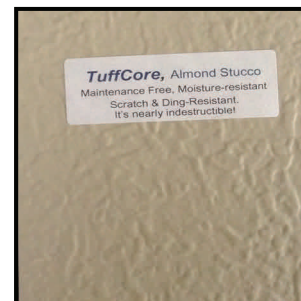
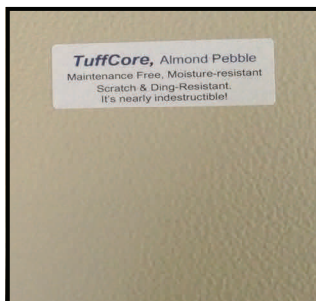
How Many on Right Hand Side Projection? ALL

How Many on Front Wall / Width? ALL



TuffCore Panel Color

*All 'non-glass' portions of your sunroom walls will have our patented TuffCore space-age vinyl finish on the inside and outside faces.



White Pebble INT. EXT.

Almond Pebble INT. EXT.

White Stucco INT. EXT.

Almond Stucco INT. EXT.

Modular Wall Details (cont'd)

Step 4. (cont'd)

Glass Package

(for Windows, Doors, Kickplates & Transoms)

Clear - Single Pane

Clear - Double Pane

Low E - Double Pane

Window Frame Color

White Almond

Extruded Aluminum Wall Frame Color

White Almond

ALIGN WINDOW HEIGHTS WITH TOP OF DOOR / HEADER HEIGHT

Yes No, not necessary

Transoms (the area above windows & doors)

12" Glass 24" Glass Solid

IMPORTANT: You will need a MINIMUM 8' tall walls in order to put glass transoms above windows and doors

Kickplates (the area below your windows)

12" Glass 24" Glass Solid

Doors

* All Pedestrian doors come pre-hung.

* Only sliding doors are available in single pane glass. | * Only sliding doors come with exterior screen doors.

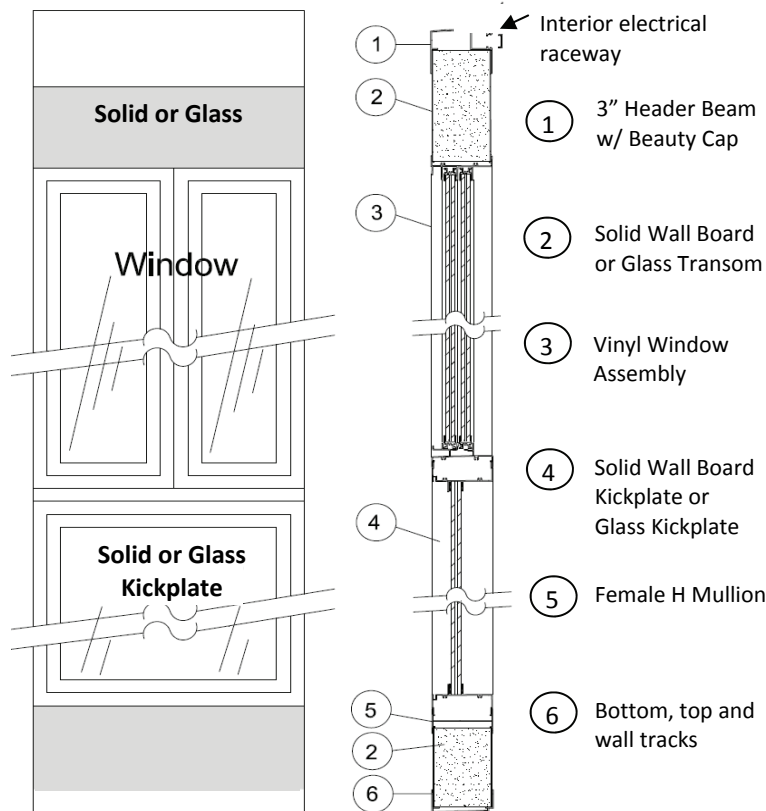
3' All Glass Pedestrian 5' Wide Sliding 6' Wide Sliding 8' Wide Sliding

6' All Glass Pedestrian (Double) 12' Bi-Parting No Doors

IN SWING Door OUT SWING Door RIGHT HAND Hinged Door LEFTHAND Hinged Door

Door Frame Color

White Almond



* All Sliding windows and doors come with fixed exterior screening.

Your initial quotation will contain not only a summary of your modular walls materials and construction, but a line drawing of what your project might look like based on your choices in these pages.

This will include a selection of window sizes in keeping with your desired wall sizes and door placements.

The description and drawing given in your quotation are simply a starting point toward finalizing what your finished project will look like.





Request for Quotation

Alpha Plus Modular Walls Under

Do Your Own Drawing

You can use this blank space to do your drawing. Be sure to include all measurements -- heights, widths, & length of walls. Be sure to fill out the first pages as well! Do not hesitate to call if you need help with putting together your request for quotation.



request@homeporchandpatiokits.com



1.705.259.2264