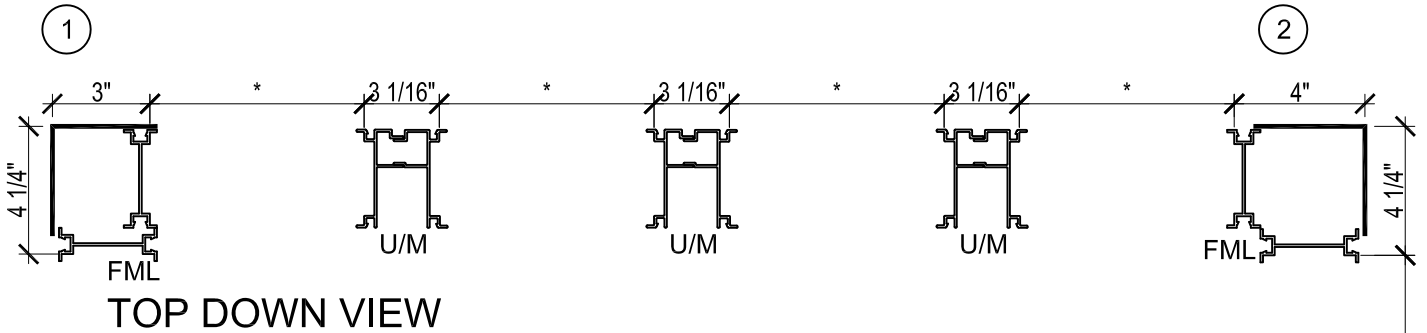


ASSEMBLY GAINS - OMEGA & ALPHA WALL SYSTEM

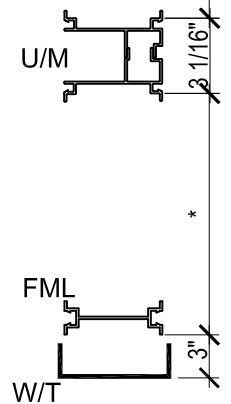


* Windows, Doors & Solids Widths

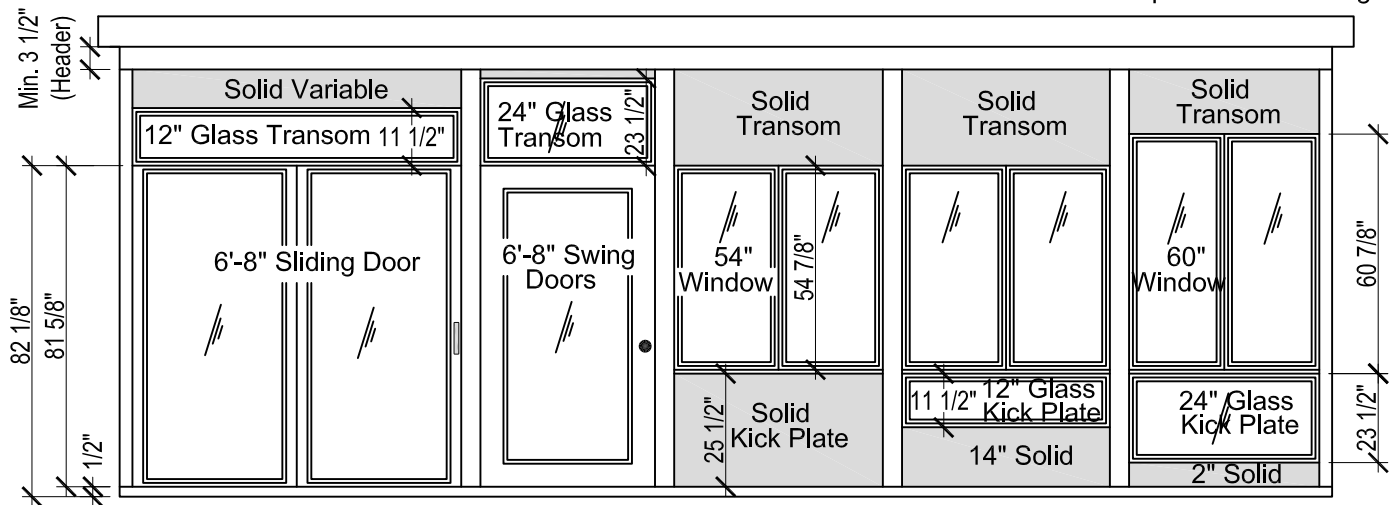
| | |
|---------------------|---------|
| 24" Window | 23 1/8" |
| 36" Window | 36 3/8" |
| 42" Window | 39 5/8" |
| 48" Window | 45 5/8" |
| 54" Window | 54 3/8" |
| 36" Pedestrian Door | 38" |
| 72" French Doors | 74 3/4" |
| 72" Sliding Door | 71 1/2" |
| 96" Sliding Door | 96 1/4" |

U/M= Utility Mullion
FML= Regular Female
W/T= Wall Track

- 1 Fully Compressed Corners
2 Non-Compressed Corners



Roof Thickness
+ Slope
= Top Attachment Height

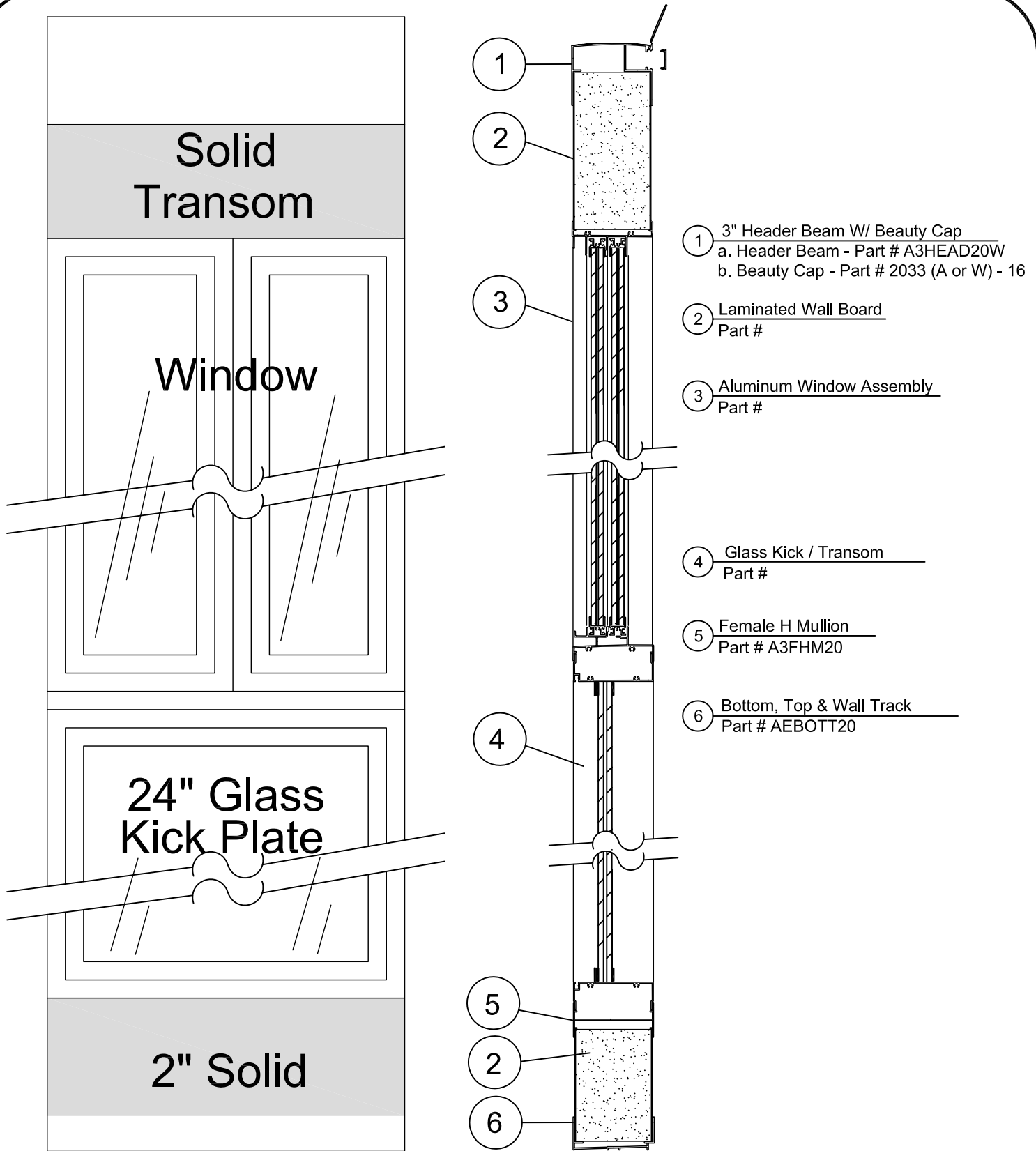


Side View

Wall Dimensions:

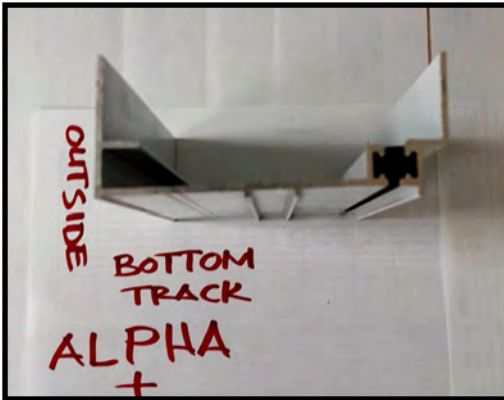


ALPHA WALL SYSTEM CROSS-SECTION

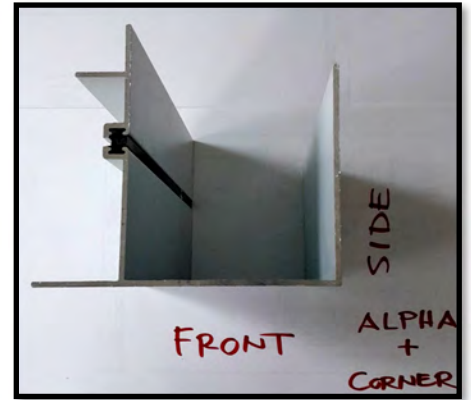
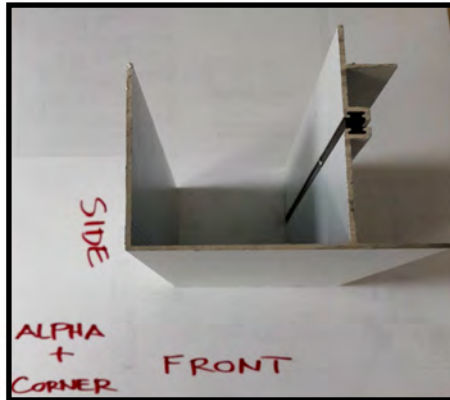


Current Alpha Plus Profiles

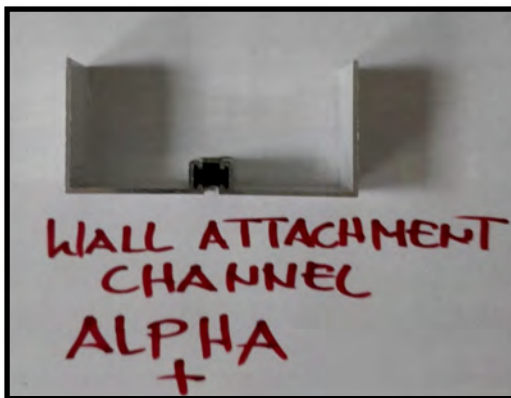
Bottom Track



Left & Right Corners



Wall Attachment



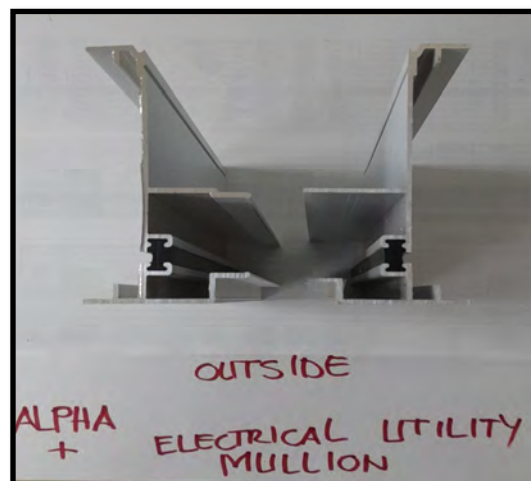
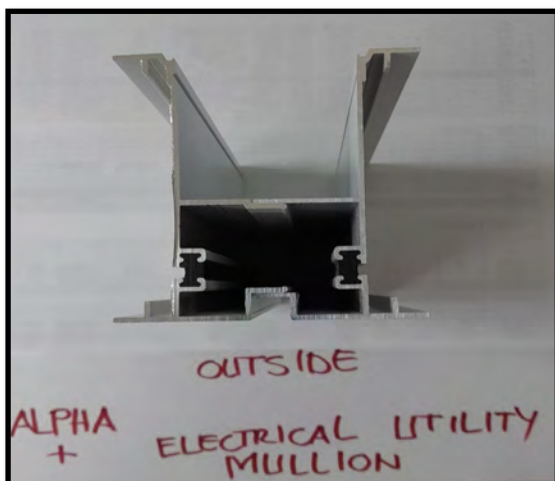
Module Connection
H Channel



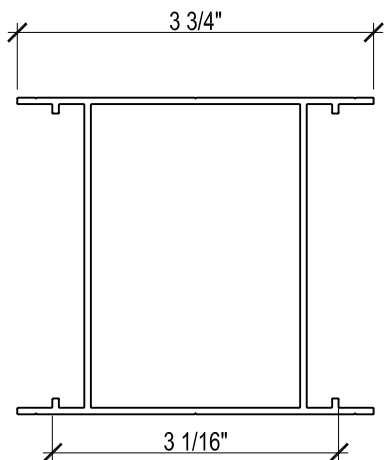
Header Channel



Module Connection Utility Mullion

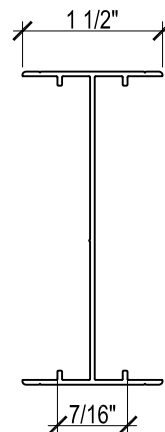


COMPONENT PROFILES - ALPHA WALL SYSTEM

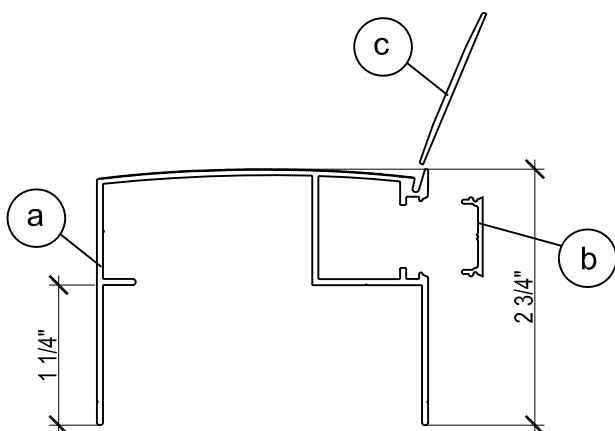


1 Utility Mullion
Part # A3UMPM20

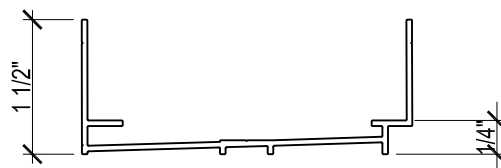
Line drawings may be out of date. Indicated measurements still apply. Refer to pictures above for current profile shapes.



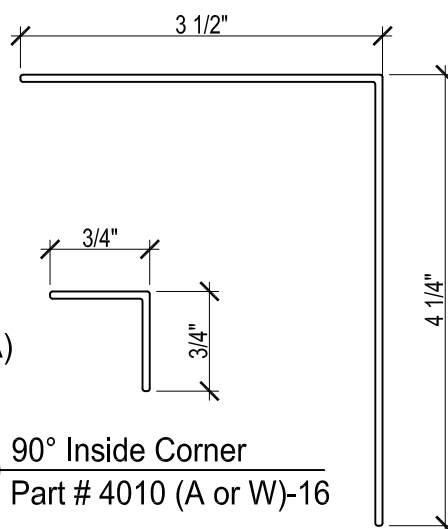
2 Female H Mullion
Part # A3FHM20



3 Header Beam W/Cap
a. Header Beam - Part # A3HEAD20W
b. Beauty Cap - Part # 2033 (A or W) - 16
c. Shadowline Extender - Part # DS-150 (50PK or 50PKA)



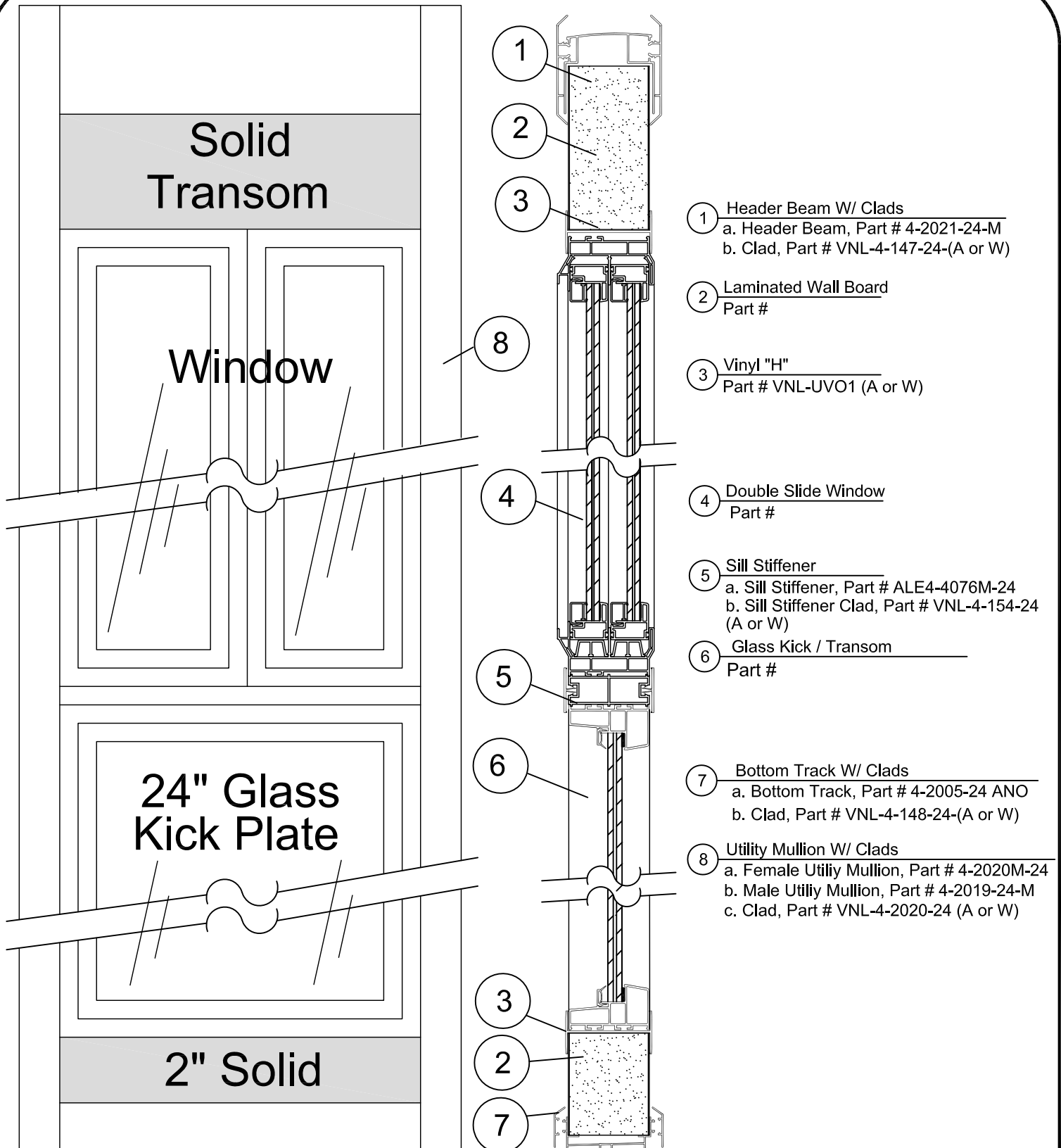
4 Bottom, Top & Wall Track
Part # AEBOTT20



5 90° Inside Corner
Part # 4010 (A or W)-16

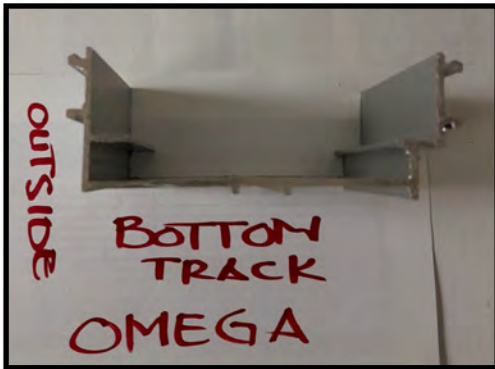
6 90° Outside Corner
Part # 4-2030 (A or W)-24

OMEGA WALL SYSTEM CROSS-SECTION

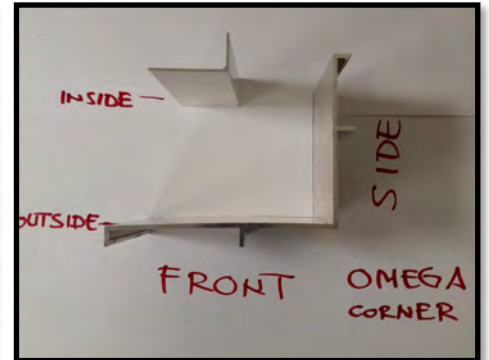
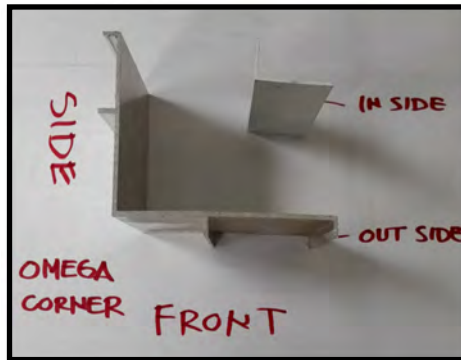


Current OMEGA Profiles

Bottom Track



Left & Right Corners



Wall Attachment



Module Connection

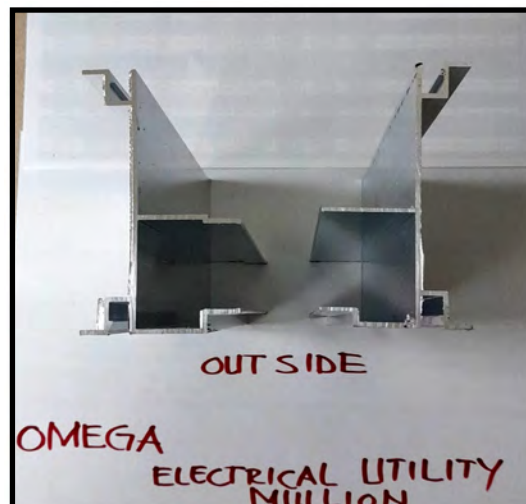
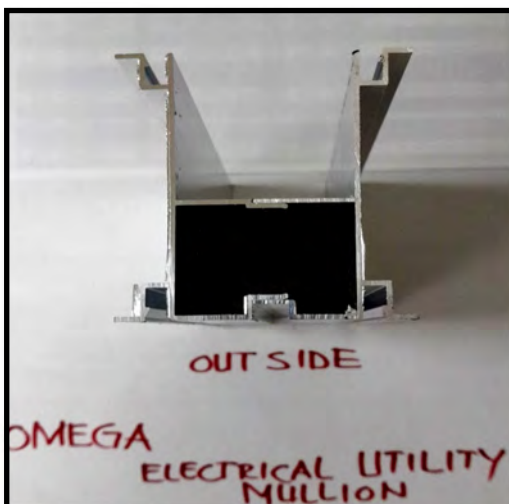
H Channel



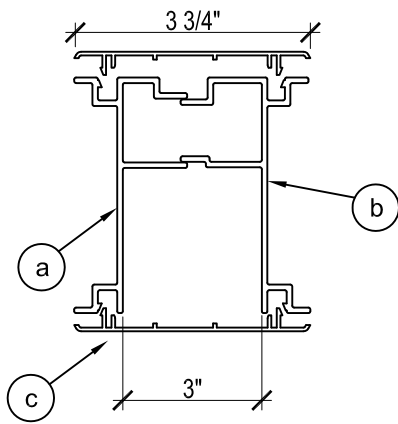
Header Channel



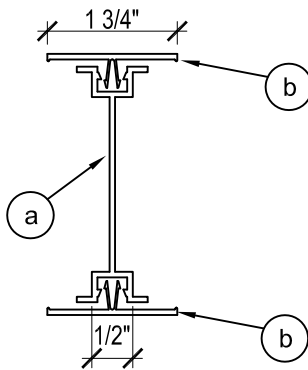
Module Connection Utility Mullion



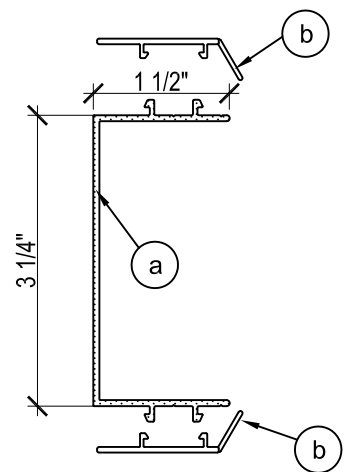
COMPONENT PROFILES - OMEGA WALL SYSTEM



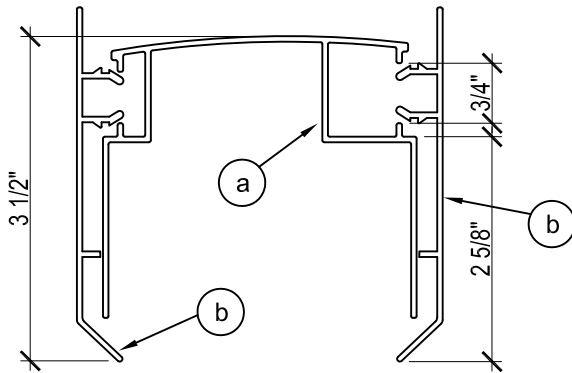
- 1 Utility Mullion W/ Clads
 a. Female Utility Mullion, Part # 4-2020M-24
 b. Male Utility Mullion, Part # 4-2019-24-M
 c. Clad, Part # VNL-4-2020-24 (A or W)



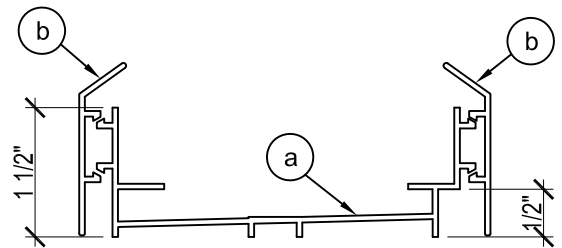
- 2 Female W/ Clads
 a. Female, Part # 4-4041-24 M
 b. Clad, Part # 4-4076M-24



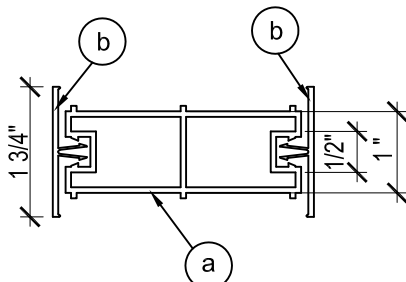
- 3 Wall Track W/Clads
 a. Wall Track, Part # ALE4-4034M-20 (A or W)
 b. Clad, Part # VNL4-148-24 (A or W)



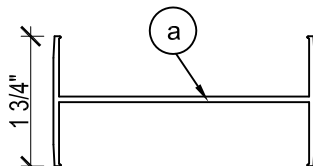
- 4 Header Beam W/ Clads
 a. Header Beam, Part # 4-2021-24-M
 b. Clad, Part # VNL-4-147-24-(A or W)



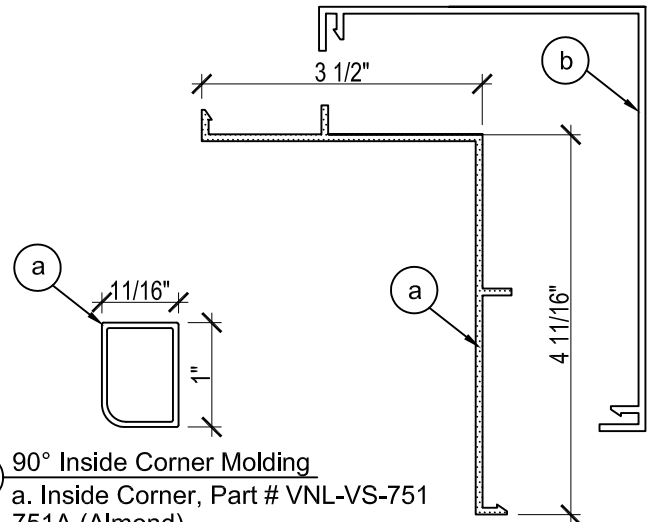
- 5 Bottom Track W/ Clads
 a. Bottom Track, Part # 4-2005-24 ANO
 b. Clad, Part # VNL-4-148-24-(A or W)



- 6 Sill Stiffener
 a. Sill Stiffener, Part # ALE4-4076M-24
 b. Sill Stiffener Clad, Part # VNL-4-154-24 (A or W)



- 7 Vinyl "H"
 a. Vinyl "H", Part # VNL-UVO1 (A or W)



- 8 90° Inside Corner Molding
 a. Inside Corner, Part # VNL-VS-751 751A (Almond)

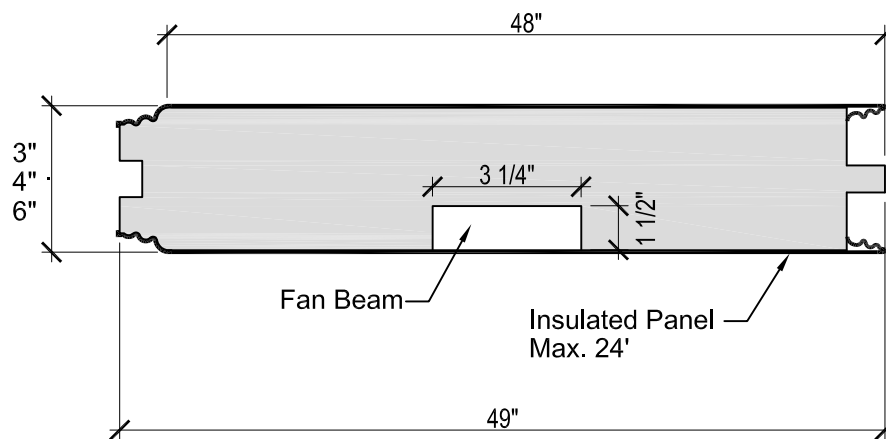
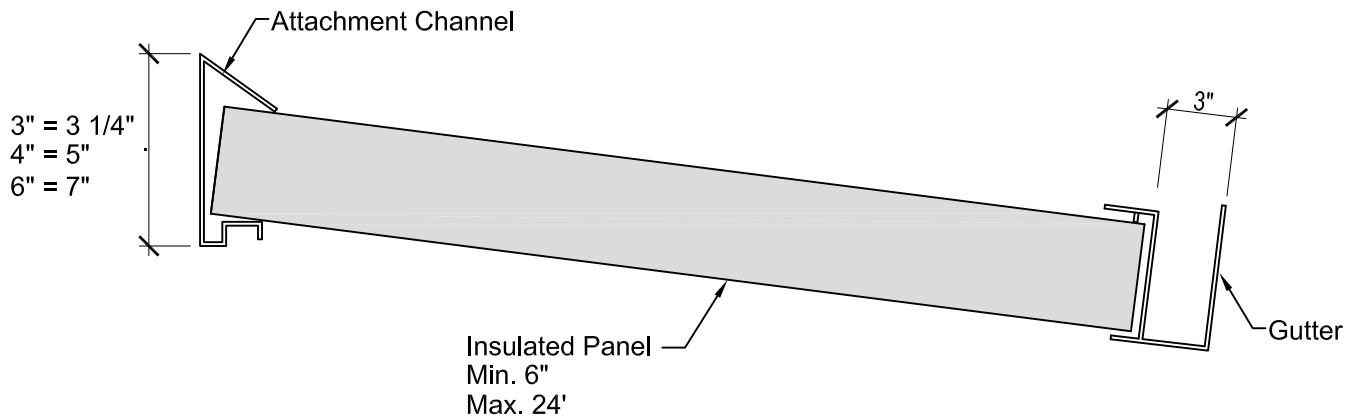
- 9 90° Outside Corner
 a. Outside Corner, Part # 4-2030M (A or W)-24
 b. Clad, Part # VNL4-2030 (A or W)-24

Wall Extrusions:



Line drawings may be out of date. Indicated measurements still apply. Refer to pictures above for current profile shapes.

ASSEMBLY GAINS - WEATHERGUARD ROOF SYSTEM

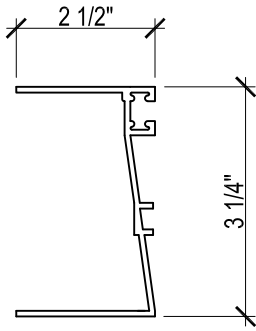


WeatherGuard Insulated Roof Dimensions:

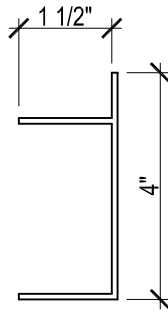


Line drawings may be out of date. Indicated measurements still apply. Refer to pictures given in the assembly guidelines for current profile shapes.

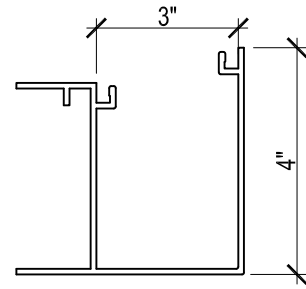
COMPONENT PROFILES - WEATHERGUARD ROOF SYSTEM



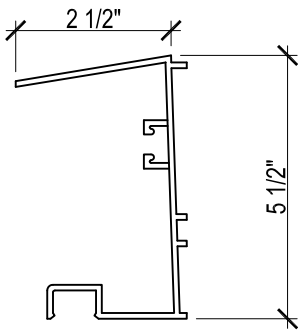
① 3" Attachment Channel
Part # 4034W-24-FD



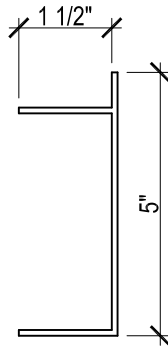
② 3" Side / Drip Facia
Part # WGR-126W-24



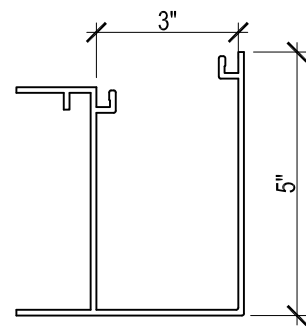
③ 3" Gutter
Part # WGR-125(A or W)-24



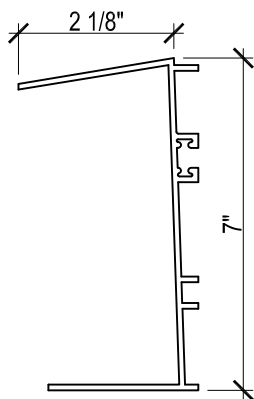
④ 4" Attachment Channel
Part # 4036W-24-FD



⑤ 4" Side / Drip Facia
Part # WGR-127W-24



⑥ 4" Gutter
Part # WGR-121 (A or W)-24



⑦ 6" Attachment Channel
Part # 4039A-24-FD



⑧ 6" Side / Drip Facia
Part # WGR-128A-16

WeatherGuard Insulated Roof Extrusions:



Line drawings may be out of date. Indicated measurements still apply. Refer to pictures given in the assembly guidelines for current profile shapes.

ALL PRODUCT FASTENERS

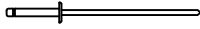
Dual Glass Roof, Fasteners



— 1. 1/4" Panhead Screw x 3"
Roof Attachment Channel To House



— 2. 1/8" Machine Screw W/Washer x 1 1/4"
All Of Roof Glazing



— 3. 1/2" Rivet x 1 3/4"
Misc. Detail Areas - All Purpose



— 4. 1/4" Self-Tap Screw x 1"
Roof Rafters To Header & Attachment Channel



— 5. 1/4" Tek Screw x 1/2"
Misc. Detail Areas - All Purpose

Weatherguard Roof Fasteners



— 1. 1/4" Panhead Screw x 3"
Roof Attachment Channel To House



— 2. 1/8" Machine Screw W/Washer x 4", 5", 7"
Insulated Roof Panel to Wall Header Or Beam



— 3. 1/2" Rivet x 1 3/4"
Misc. Detail Areas - All Purpose



— 4. 1/4" Self-Tap Screw x 1"
Insulated Roof Panel To Attachment Channel

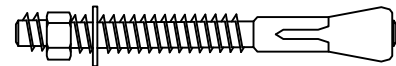


— 5. 1/4" Tek Screw x 1/2"
Misc. Detail Areas - All Purpose

Wall Fasteners



— 1. 3/8" Hilti Kwik Bolt x 3"
Bottom Track to Wood Deck



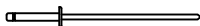
— 2. 1/2" Self-Tap Screw x 1 1/2"
Bottom Track to Cement Slab



— 3. Plastic Expansion Plug
Plug For Wall Track To House Wall



— 4. 1/2" Self-Tap Screw x 1 1/2"
Wall Track To House Wall



— 5. 1/2" Rivet x 1 3/4"
Misc. Detail Areas - All Purpose



— 6. 1/4" Tek Screw x 1/2"
Bottom / Top Track / Corners & Wall Tracks To Mullions